





**Brighton & Hove
Youth Offending Team**

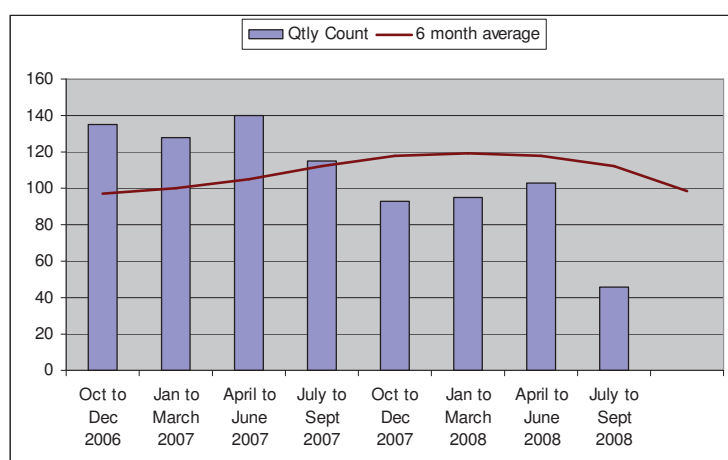
**Quarterly Performance
& Activities Report**

**Q2 2008/9 July to Sept
Produced November 2008**

National Indicator NI 111: First-time entrants to the youth justice system aged 10-17

Objective	Target/Baseline	Q1	Q2	Q3	Q4	Status
Reduce the number of FTE	5% reduction on 443 (2007/8 baseline)	103	46			
Roll our RJ project from 1 st Sept 2008	A third RJ training course was held in Oct with 24 participants. There are now a total of 60 trained facilitators in the city.					
Implement 'Listen and Learn' project in schools by Dec 08	The Listen and Learn project has now been launched and schools are being sent fliers and a CD containing the track played on ITV Fixers. The aim is to get the group into 5 schools before the end of the academic year.					
Deliver preventative diversionary programmes through TYS	Programmes are being delivered although there is a gap in how this may be effecting FTEs. A formal process for tracking those involved in TYSS activity needs to be developed.					

Commentary



The number of first time entrants for the year so far is 149, which is a 58% reduction against the same period last year (255).

Checks have been undertaken with Sussex Police to ensure that the figures are accurate and the reduction is not due to any inputting errors.

YOT comparisons to PNC data for the year 2007/8 show a loss of 11% of data (due to police not informing the YOT) which is above the national average of a 16% loss.

TYSS

FTE analysis for the TYSS found that 40% of those young people live in East area and 30% each in West and Central. A number of areas were highlighted for targeting. TYSS are keen to take on Final Warning assessments, although this still needs to be formally agreed and is being discussed at the fortnightly operational group.

The first Challenge and Support data return was produced showing that the West area is well underway but Central is still developing a referral pathway. A meeting was held with two representatives from the Challenge and Support project who were impressed with the work going on in Brighton & Hove.

Restorative Justice Project

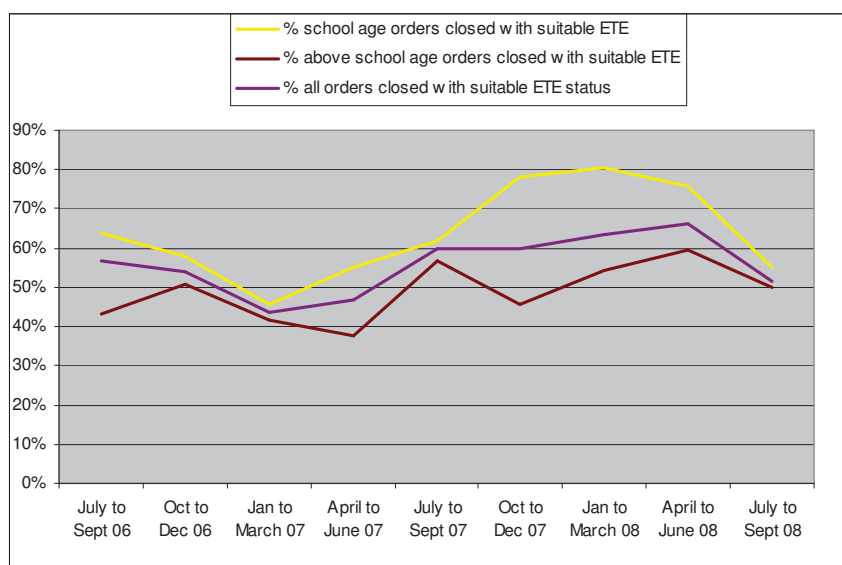
A third Restorative Justice Training Course was held in October with 24 participants which means that there are now nearly 60 trained facilitators in the city. A review meeting has been set up for 3rd December for all facilitators to get together and consider how things are going and how the work can be best developed. A significant number of the latest training group were from the TYSS and negotiations are underway to formalise referral procedures. Funding has been found to create a new post of RJ 'Champion' which will be appointed to lead this development in the city in due course.

7 young people were referred to the RJ project with 3 accepted and 4 declined. Those who were accepted have completed the intervention and will be tracked to identify if they enter the youth justice system.

National Indicator NI 45: Engagement by young people who offend in suitable education, training and employment (25hrs for school age and 16 hours for above school age)

Objective	Target	Q1	Q2	Q3	Q4	Status
Improve ETE hours of those of school age	80% in suitable ETE	76%	55%			■
Improve ETE hours of those above school age	55% in suitable ETE	60%	50%			■
Improve ETE hours of all young people with the YOT	70% in suitable ETE	66%	52%			■

Commentary



ETE figures are all showing a reduction since the last quarter, but those above school age are still reaching the 55% target for the two quarters combined.

The Arts Council Application has now been submitted for project work in schools involving poetry, story telling and theatre. Patcham High School has been identified as the partner school and the project working title is 'What if...' We expect to hear whether we have been successful before Christmas.

The ESF funded tutor mentor has not yet been appointed due to having to put the

job description through a lengthy HR procedure, but the project is beginning to work with specific young people supporting them financially and practically to access KS4 Engagement programmes.

The uptake for Rapid English has been slow but this is mostly due to a falling number of young people who might need it coming into the service. Those who have used it have been enthusiastic about it but have not made much progress because their circumstances have changed quickly and meant that they have not had long enough to get going.

The Employment Project is intending to extend its service to offer places to TYSS clients and YMCA clients - this is in line with targeting first time offenders and those at risk of offending. The Project is extending its offer to include a certificated training course in Fork Lift Truck Driving. It will also be exploring other options such as taking young people into part time placements to run alongside other training courses.

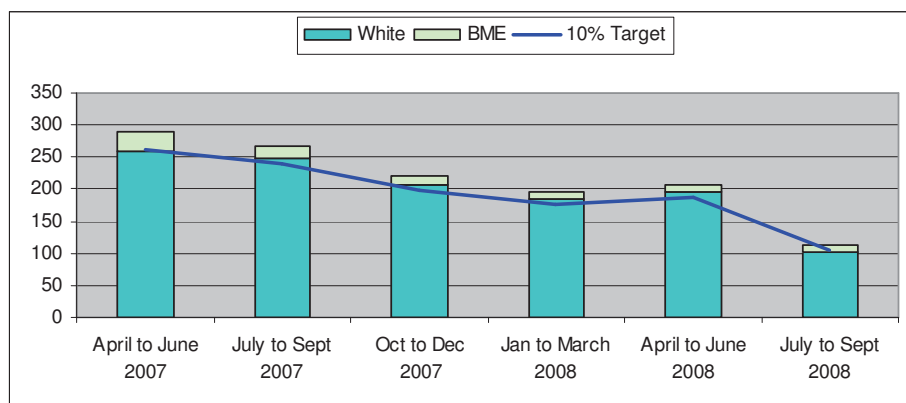
The ETE Manager has been part of a CYPT Working Party writing guidance for schools about reintegration from exclusion, managed moves and induction from out of area. This will be underpinned by Restorative Justice Principles to link in with the work being done elsewhere in the city.

The Listen and Learn project has now been launched and schools are being sent fliers and a CD containing the track played on ITV Fixers. The aim is to get the group into 5 schools before the end of the academic year. ITV made a short broadcast which went out on Meridian news, the video can be viewed on the ITV Fixers website http://projects.itvfixers.com/listen_and_learn. Funding applications have gone to the Princes Trust to produce more CDs, flyers and t-shirts. This project has been run by the young people involved with YOT workers providing support.

National Indicator NI 44: Ethnic composition of young people in youth justice system disposals

Objective	Target	Q1	Q2	Q3	Q4	Status
Overall ethnic composition to remain at less than 10% of all young people with the YOT	Less than 10%	6%	10%			■

Commentary



BME proportionality remains within target at 10% this quarter.

Local and Census estimate data has been used to create more robust and up to date ethnicity figures since the 2001 Census. 2005 mid year Census estimates put the city ethnicity figure at 8.1%. The Connexions database 'Aspire' found 8.9% of young people belonging to black and ethnic minority groups.

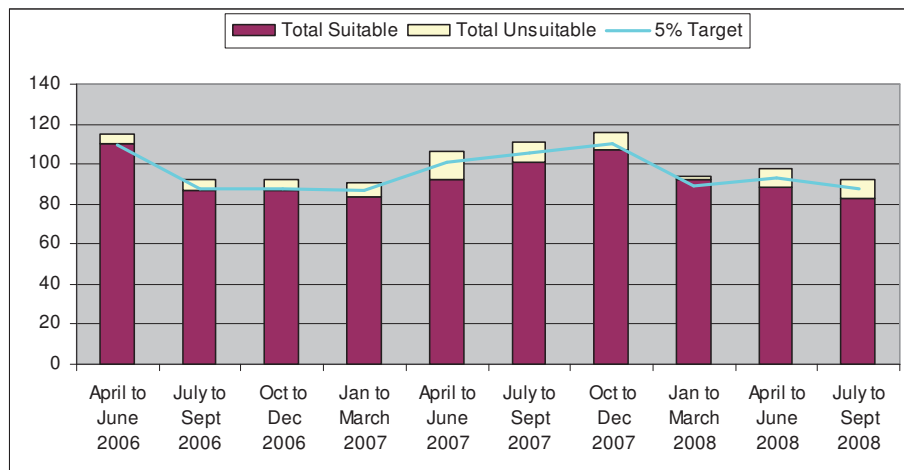
The October YJB validation of the YOT Capacity and Capability plan recommended that more work was needed around initial analysis, which identified increased disproportionality of BME young people as they go higher through the youth justice system. At least 3 years of data will need to be used due to the very low numbers of BME young people living in Brighton & Hove.

An equalities impact assessment is currently being undertaken which includes consultation with YOT staff and service users. It is recommended that any BME issues are picked up within this document as the output will be an action plan for addressing any equalities.

National Indicator N1 46: Access by young people who offend to suitable accommodation

Objective	Target	Q1	Q2	Q3	Q4	Status
To be in suitable accommodation at the end of their order	95% or higher	90%	89%			

Commentary



The number of young people in suitable accommodation remains under the 95% target this quarter, at 89% (9 out of 83).

Of those young people not in suitable accommodation

- 7 were in bed & breakfast
- 1 staying at friends
- 1 staying in a hostel

Of those not in suitable accommodation

- 3 were on a Referral Order
- 4 were on a Community Rehabilitation Order
- 2 were on Custody Licence

The figure of 89% of young people being in suitable accommodation at the end of their order is the lowest figure since the quarter of April 2007. It is also the second lowest figure since April 2006. Whilst the figure has not become significantly low it could suggest that the loss of the dedicated housing officer (currently on maternity leave) has had a negative impact on YOT clients. However a good relationship has been created between the YOT, YAC and YMCA so this low figure may just be a 'blip' during the handover period. It is recommended that figures are reviewed at the end of next quarter to identify if there is a continuing downward trend.

No further update is known due to the lack of specialist knowledge within this area.

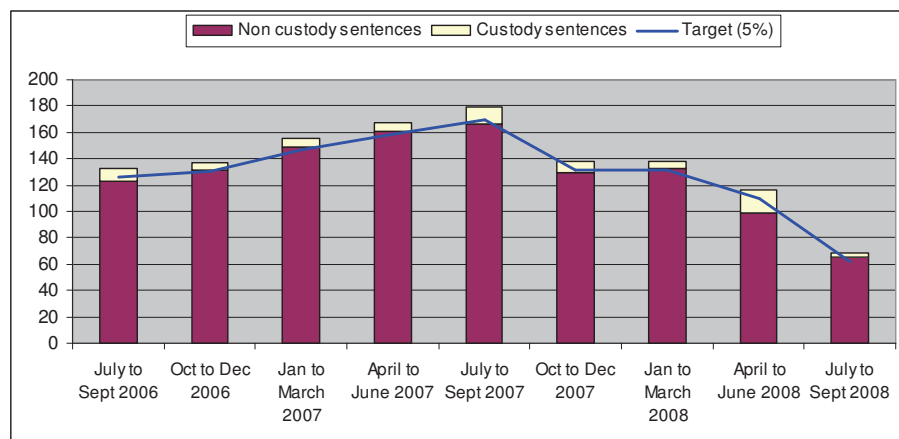
Action

Include those not in suitable accommodation as a monthly data check once the new Information Officer is in post (January 2009)

National Indicator NI 43: Young people receiving a conviction in court who are sentenced to custody

Objective	Target	Q1	Q2	Q3	Q4	Status
Percentage of those receiving custody	5% or less	15%	4%			

Commentary



The number of young people entering custody this quarter has reduced from 15% to 4% which is slightly below target, giving a figure of 10% for the year so far.

One custody sentence was revoked due to the court imposing the sentence illegally. This young person was detained for one week.

For the quarter, 3 out of 68 court outcomes resulted in a custody sentence.

	2005/6	2006/7	2007/8	2008/9
April to June	11	4	6	17
July to Sept	5	10	13	3
Oct to Dec	5	5	9	
Jan to March	3	6	5	
Total	24	25	33	20

There were 17 all options reports requested during the period, of which three received custodial sentences.

Of those receiving a custodial sentence, 2 had previously received a custody sentence. For the



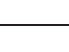

third young person, the custody sentence was for a first offence of a high gravity. All young people were aged sixteen or seventeen but it was found that of those who had received custody before, one was aged 11 years and one 13 years when they first came to the attention of the YOT. It is recommended that further analysis is undertaken to look at the average ages of committing a first offence for those who later go on to receive a custodial sentence.

Barnardos are currently undertaking national research into custody sentences given to young people aged 12 to 14 years. It was found in Brighton & Hove that 9% of all custody sentences in 2007/8 were given to a person aged 14 or under. As this work is ongoing, any further findings will be reported back next quarter.

The YOT has been working closely with the local youth court, as part of the CJSSS, to help speed up youth justice. One action taken has been to move one of the youth court remand days from Monday to Tuesday. This will hopefully give the CPS more time to prepare their paperwork and so able to prosecute cases with greater haste.

The opening of Cookham Wood YOI has recently been seen to have had an impact on the placement of young people sent into custody. Several young people have now been sent there and others have been transferred in from YOI's further afield. Cookham Wood is closer to Brighton & Hove than Huntercombe YOI, the previously closest YOI for sentenced young people, and so provides greater opportunities for parents/carers to visit, as well as being less time consuming for YOT staff.

National Indicator NI 19: Rate of proven re-offending by young people who offend

Objective	Target/Baseline	Q1	Q2	Q3	Q4	Status
To reduce re-offending against 2005 baseline	38% re-offending rate (2005/6)	18%	21%			
Ensure all those in deter cohort receive additional support	This area is being developed with provisional acceptance of the employment of a full time project worker to work with those considered at high risk of re-offending					
Support continuous improvement of interventions through young persons evaluation and feedback	Two young people from the Service Users Group are due to attend the weekly Management meeting with their ideas on improving support on ISSPs					
Use of aftercare package with TYS for those most at risk	It has been agreed that TYSS will take on around 30% of statutory work (to include prevent and deter work)					

Commentary

	2005 3 months	2008 3 months	2005 6 months	2008 6 months	2005 9 months	2008 9 months	2005 12 months	2008 12 months
Total pre-court cohort population	104	97	104	97	104	97	104	97
Number re-offending	14	9	19	11	23		27	
Number of offences	23	12	38	14	61		83	
Pre-court % re-offending	13%	9%	18%	11%	22%		26%	
Total first-tier cohort population	28	42	28	42	28	42	28	42
Number re-offending	7	5	8	8	10		11	
Number of offences	21	7	25	12	30		36	
First Tier % re-offending	25%	12%	29%	19%	36%		39%	
Total community penalties cohort population	34	36	34	36	34	36	34	36
Number re-offending	11	15	17	15	20		24	
Number of offences	29	33	58	40	70		80	
Community Penalties % re-offending	32%	36%	50%	36%	59%	36%	71%	36%
Total released from custody cohort population	3	6	3	6	3	6	3	6
Number re-offending	2	4	3	4	3		3	
Number of offences	6	10	14	13	16		16	
Custody % re-offending	67%	67%	100%	67%	100%		100%	
Total cohort	169	181	169	181	169		169	
Total re-offending	34	33	47	38	56		65	
Total offences	79	62	135	79	177		215	
Total % re-offending	20%	18%	28%	21%	33%		38%	




The table above shows the 2005 re-offending baseline measurements at 3 monthly intervals, giving an overall baseline of 38% total reoffending at 12 months. When compared to the same quarters for the baseline year, Q1 and Q2 for 2008/9 data both show a reduction in re-offending rates.

Figures provided by East and West Sussex show their baseline at 35% and 39% respectively. Reoffending rates in Sussex can therefore be seen to be very similar.

The objectives above are ongoing and have been rated as yellow due to not yet having an impact on workloads or improved outcomes for young people.

A performance focus group is being developed, consisting of caseworkers who will explore analytical findings and performance data to provide insight and the story behind the figures. A trial of this method will be held using analysis undertaken for one of the caseworkers doing a Masters in Applied Forensic Psychology. If successful a formal terms of reference and commissioning method will be established.

Data Quality and National Standards

Objective	Target/Baseline	Q1	Q2	Q3	Q4	Status
Create and a series of 'checklists' to ensure workers are aware of fields to be completed to reach national standards		Completed				
Dip check closed interventions to ensure data quality	Minimum of one per case worker	17	0			
Produce a quarterly report based on national standard accuracy with development recommendations	1 report per quarter	1	0			

Performance Table

Ref	National Standard	2007/8	Q1 2008/9	Q2 2008/9	Q3 2008/9	Q4 2008/9
6.60	FW start assets completed in 10 working days	49%	39%	32%		
6.11	FW end assets completed in 10 working days	93%	N/A	100%		
2.56	The number of planning meetings held by the secure establishment within five working days of the young person's arrival which the YOT attended	83%	100%	67%		
2.38	Number of young people subject to bail supervision and support receiving the expected number of contacts (i.e. three per week)	60%	25%	0%		
8.19	Of those on Referral Orders, number of first appointments with offender and his/her family held within five working days of sentence	50%	59%	40%		
8.39	Of those on Action Plan and Supervision Orders, number of initial contacts taking place within one working day of sentence	78%	81%	90%		
8.90	Of those on Action Plan and Supervision Orders, number of plans completed within 15 working days of sentence	90%	67%	95%		
8.24	Of those on the first half of a Referral Order, number receiving the expected number of contact during the period (i.e. one per fortnight)	83%	90%	67%		
8.24	Of those on the second half of a Referral Order, number receiving the expected number of contacts during the period (i.e. one per month)	88%	75%	78%		
8.40	Of those subject to the first 12 weeks of an Action Plan or Supervision Order, number receiving the expected number of contacts during the period (2 per week)	49%	75%	50%		
8.40	Of those subject to between the 13th and 26th weeks of an Action Plan or Supervision Order, number receiving the expected number of contacts during the period (i.e. one per week)	57%	25%	40%		
8.40	Of those subject to the 27th week or later of an Action Plan or Supervision Order, number receiving the expected number of contacts during the period (i.e. one per fortnight)	73%	66%	50%		
8.70	Of those on an Action Plan, Supervision or Referral Order, number of unexplained failures to attend during the period dealt with by the YOT within 1 working day	U/K	U/K	U/K		
8.80	Of (d), the number where breach action was stayed, in agreement with the Yot Manager	U/K	U/K	U/K		
11.40	Of those sentenced to a DTO in the period, number whose reports were sent to the secure facility within one working day of sentence (i.e. Asset, PSR, PCR)	90%	66%	100%		
11.16	Of those subject to a DTO of no more than 12 months, number receiving the expected number of visits during the period (i.e. at least one per month)	N/A	N/A	N/A		
11.16	Of those subject to a DTO more than 12 months, number receiving the expected number of visits during the period (i.e. at least one every two months)	100%	100%	N/A		
11.17	Of those transferred to the community element of a DTO during the period, the number seen by a supervising officer on the day of transfer	70%	100%	90%		
11.20	Of those on the first 12 weeks of the community element of a DTO the number receiving the expected contacts during the period (i.e. two per week)	70%	100%	100%		
11.20	Of those subject to the 13th week (or later) of the community element of a DTO, the number receiving the expected number of contacts during the period (i.e. one every fortnight)	62%	100%	75%		
	90% or above	4	6	6		
	70% to 89%	7	3	2		
	69% and below	6	7	8		

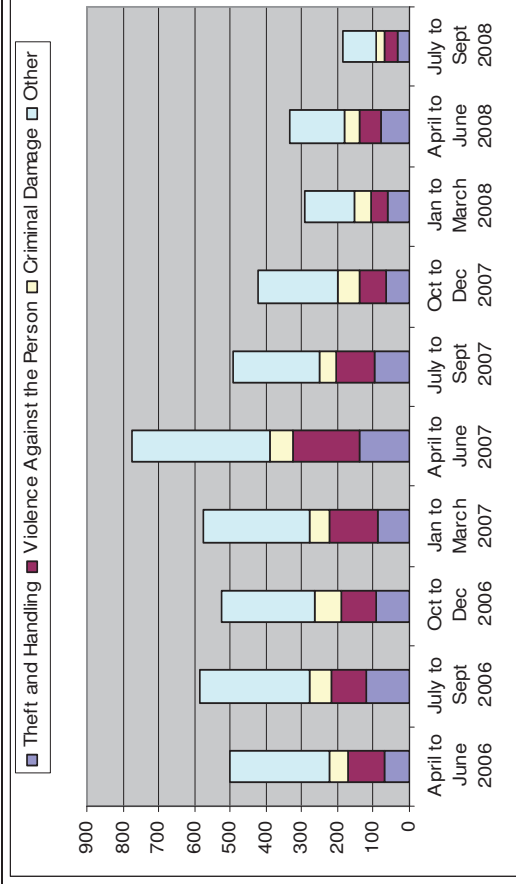
National Standards continue to show sporadic performance in the second quarter and no identifiable improvement since the year 2007/8. No additional work has taken place this quarter to improve recording and/or figures due to staff shortages.

Other YOT Activities

Area

Commentary

Offences

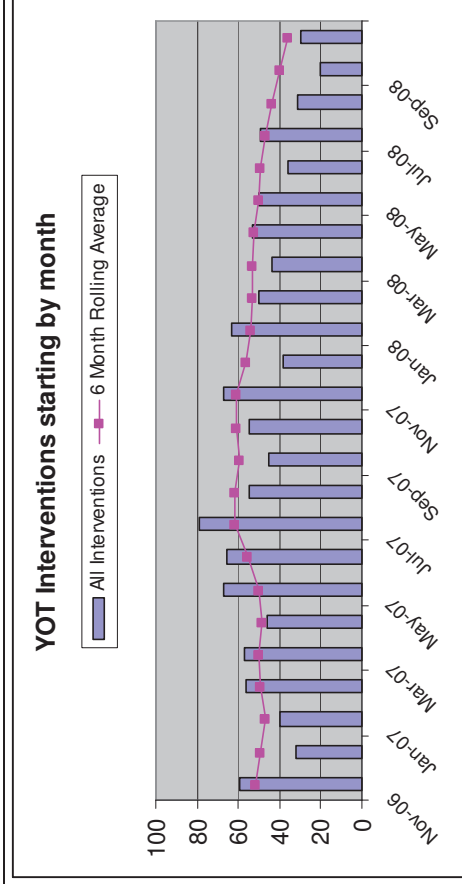


The number of offences has fallen in line with the number of YOT interventions (graph below).

This quarter identifies violence against the person as the most common offence type (20%). Previously theft and handling has been the most prevalent offence, which for this quarter is 18% of all offences. This trend should be monitored as theft and handling has been the most common offence type for the last 2 years.

Criminal damage remains the third most common offence type.

Interventions beginning



The number of YOT interventions has shown a small increase for October 2008 but the rolling six month average shows a continued downward trend.

Staffing

Geoff Williams has been appointed as Head of Youth Strategy and Justice until September 2009 when the post will be reviewed. Interviews are due to take place for the post of Information Officer and full time Administrator. Funding to recruit to the Prevent and Deter post has been agreed with Linda Beanlands (Head PCST). The prevent referrals (1st time entrants) will come via the Police diversionary processes (RJ and drug and alcohol assessments) and the Deter

	referrals will come from the YOT to a project worker based within the YOT (JD/Job Spec to be agreed).
Building	Two potential buildings have been found due to the YOT's current contract ending in September 2009 and difficulties caused by being located across 2 sites. The favoured premises are 49 Church Road (near Palmeria Square). A report is to be prepared for Cabinet in January 2009
Work with victims	Work is ongoing with all victim details going onto YOIS. 54 victims were identified for Q2, 16 of these were not suitable for any intervention activity and 19 are still to be followed up by the Victim worker (all victims receive an initial letter from the YOT). 7 new victims have been engaged in restorative justice activity which equates to 50% of those contacted in the period. No interventions have ended in the period so there is no update to those who were satisfied with work undertaken by the YOT.
Risk of serious harm and safeguarding	The monthly MOSH (Management of Serious Harm) meetings continue. There are currently 6 young people identified at MAPPA Level 1 and 1 at Level 2. The MAPPA co-ordinator came to the management team meeting to explain changes to legislation.
Service Users Group	The service user group has now met three times. One participant has moved abroad and so a replacement is being sought. Attendance at the most recent meeting was poor with 2 young people attending (out of the original group of 7). Two of the young people are due to attend the weekly management meeting to bring ideas that have emerged from the meeting.
Public Confidence	The meeting with the Sussex Police lead on the Citizens Panel Community Safety Survey was cancelled due to the officer moving jobs. No further work has taken place on this business due to lack of staffing.
Parenting	The Triple P group, anger management and parenting groups continue. These are all due to end in December when new groups and interventions will need to be implemented.
Volunteers	9 new volunteers are currently being trained over 4 consecutive weekends and will be ready to start in an official capacity by the end of November 2008. In Quarter 2, 103 Appropriate Adults were requested (28 less than last quarter) and 91 were provided equating to 88% which is equal to the provision last quarter.
SAFE project	In the period July to September 2008 there were 35 letters sent to young people and their families, 12 initial visits made, 12 agreed to participate in the study of which 4 have been randomised to the FFT and 3 to treatment as usual. For a variety of reasons there have been fewer young people available for the study than had been anticipated and a review is to be held on the 28 th November to look at ways of including other young people in the study.
Information Technology	A specification has been produced to use the Connexions Aspire database to record youth offending data. The quote was for £35k development and £20k annual maintenance. This figure was considered too high considering that funding will be required for the office move.